



Instruction Sheet

How to Assign a Static IP Address

in Windows 7, 8, 10, XP, or Vista

When organizing your home network it's easier to assign each computer it's own IP address than using DHCP. Here we will take a look at doing it in XP, Vista, Windows 7, Windows 8.x, and Windows 10.

If you have a home network with several computers and devices, it's a good idea to assign each of them a specific address.

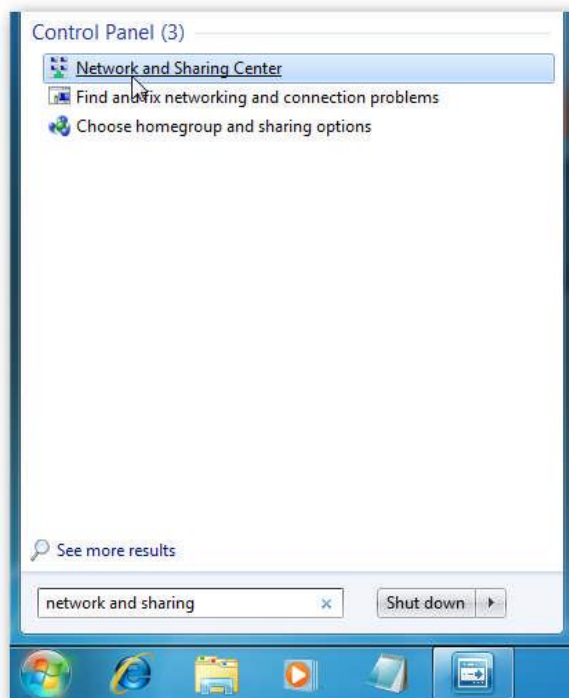
If you use DHCP (Dynamic Host Configuration Protocol), each computer will request and be assigned an address every time it's booted up. When you have to do troubleshooting on your network, it's annoying going to each machine to figure out what IP they have.

Using Static IPs prevents address conflicts between devices and allows you to manage them more easily. Assigning IPs to Windows is essentially the same process, but getting to where you need to be varies between each version.

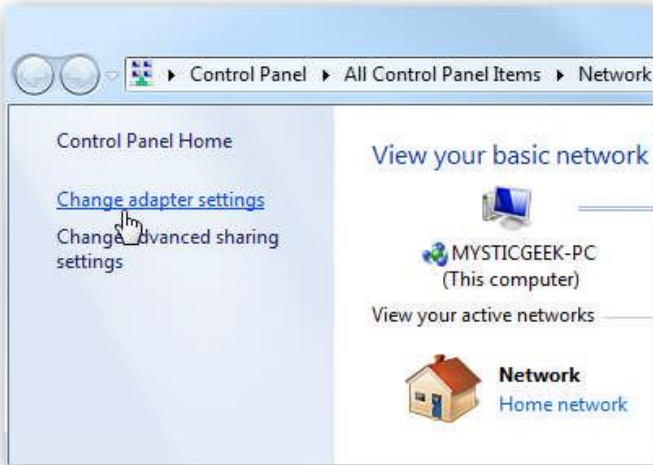
Windows 7 or Windows 8.x or Windows 10



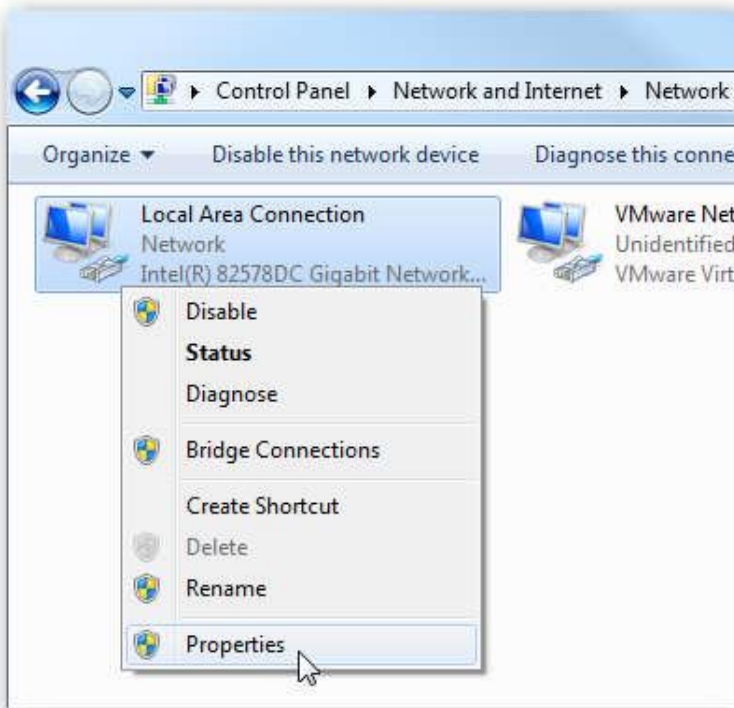
To change the computer's IP address in Windows, type network and sharing into the Search box in the Start Menu and select Network and Sharing Center when it comes up. If you are in Windows 8.x it will be on the Start Screen itself, like the top. If you're in Windows 7 it'll be in the start menu. In Windows 10, it'll be on the task bar next to the Windows icon, or it will be in the drop down menu after you right-click the Windows icon.



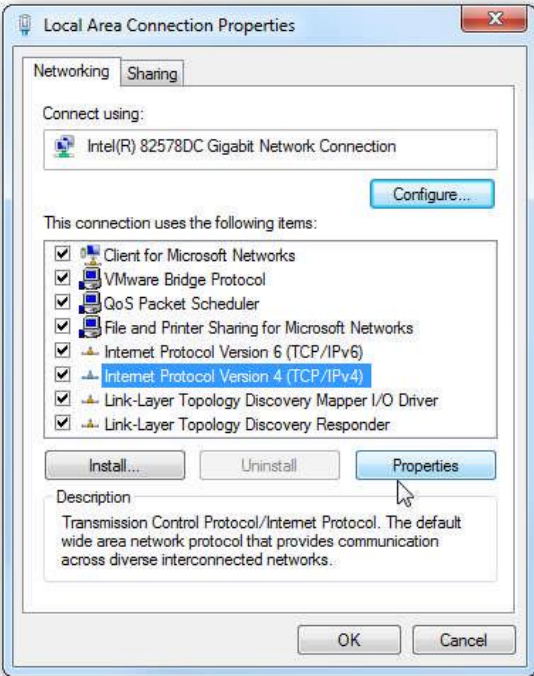
Then when the Network and Sharing Center opens, click on Change adapter settings. This will be the same on Windows 7 or 8.x or 10.



Right-click on your local adapter and select Properties.

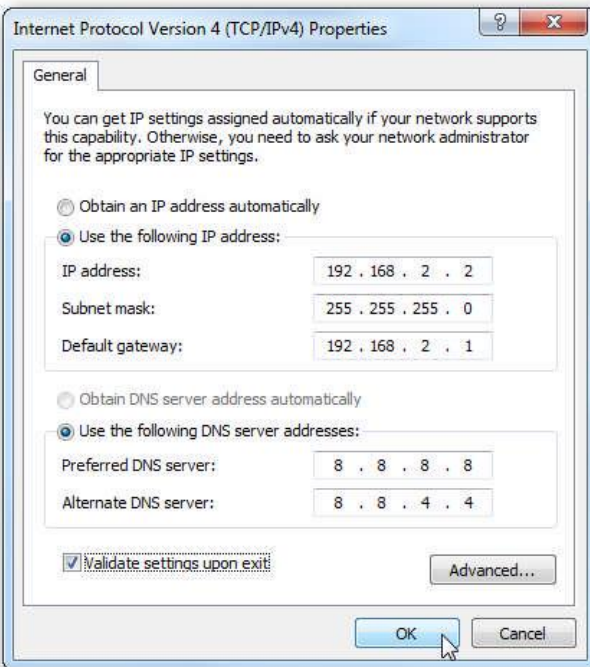


In the Local Area Connection Properties window highlight Internet Protocol Version 4 (TCP/IPv4) then click the Properties button.



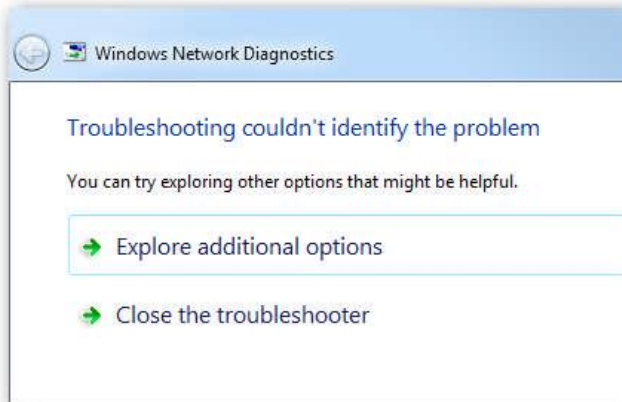
Now select the radio button **Use the following IP address** and enter in the correct IP, Subnet mask, and Default gateway that corresponds with your network setup. Then enter your Preferred and Alternate DNS server addresses.

Here we're on a home network and using a simple Class C network configuration and Google DNS. Check Validate settings upon exit so Windows can find any problems with the addresses you entered. When you're finished click OK.

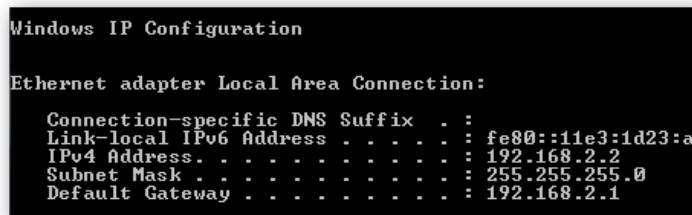


Now close out of the Local Area Connections Properties window.

Windows will run network diagnostics and verify the connection is good. Here we had no problems with it, but if you did, you could run the network troubleshooting wizard.

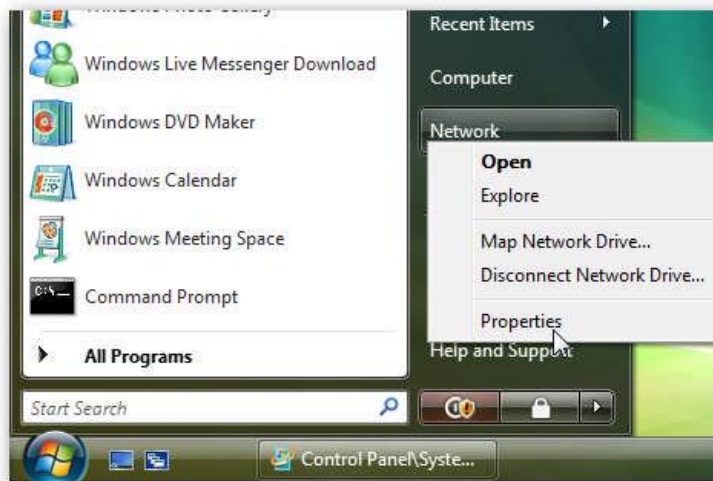


Now you can open the command prompt and do an ipconfig to see the network adapter settings have been successfully changed.

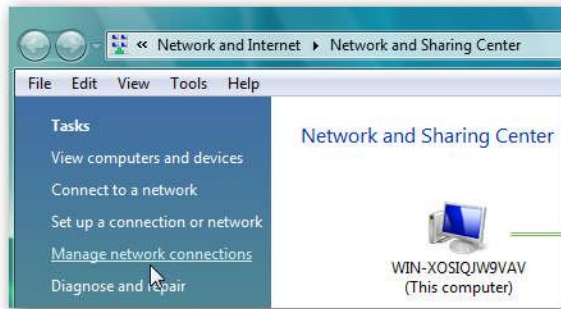


Windows Vista

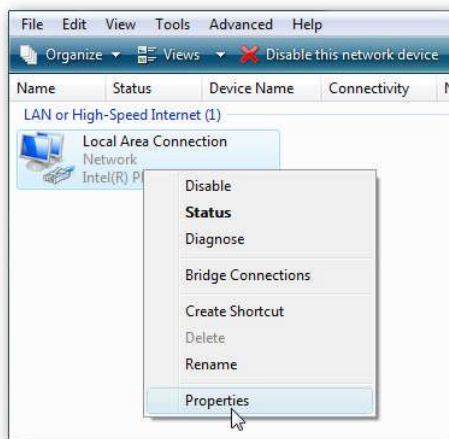
Changing your IP from DHCP to a Static address in Vista is similar to Windows 7, but getting to the correct location is a bit different. Open the Start Menu, right-click on Network, and select Properties.



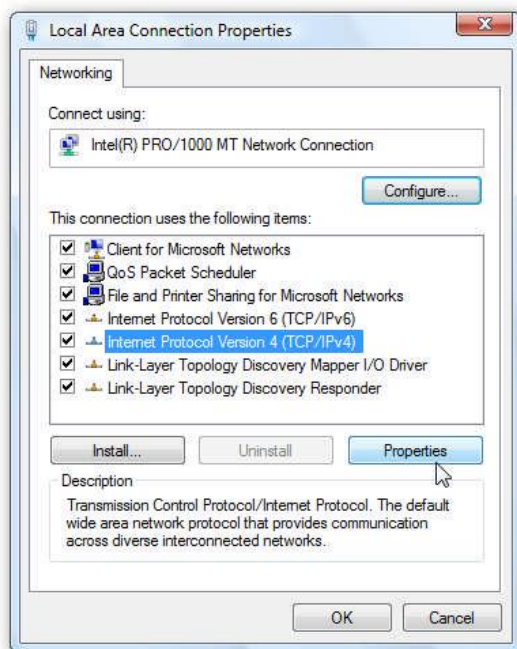
The Network and Sharing Center opens...click on Manage network connections.



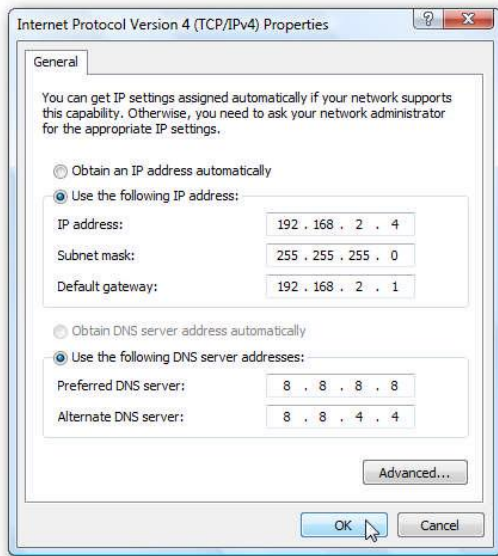
Right-click on the network adapter you want to assign an IP address and click Properties.



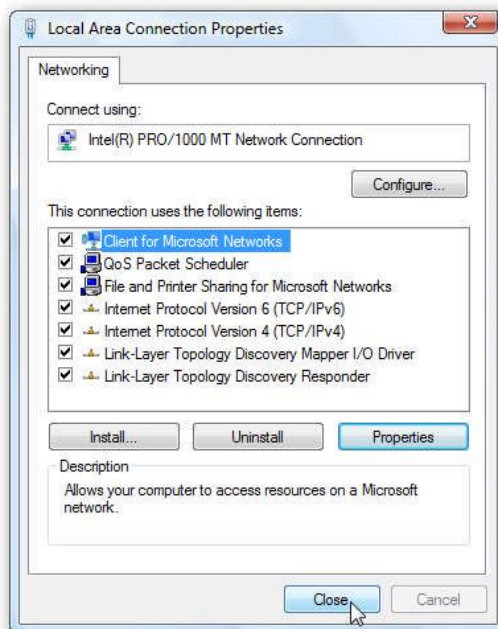
Highlight Internet Protocol Version 4 (TCP/IPv4) then click the Properties button.



Now change the IP, Subnet mask, Default Gateway, and DNS Server Addresses. When you're finished click OK.



You'll need to close out of Local Area Connection Properties for the settings to go into effect.



Open the Command Prompt and do an ipconfig to verify the changes were successful.

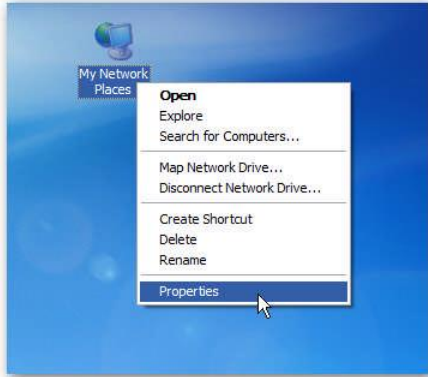
```
C:\Users\mysticgeek>ipconfig
Windows IP Configuration

Ethernet adapter Local Area Connection:

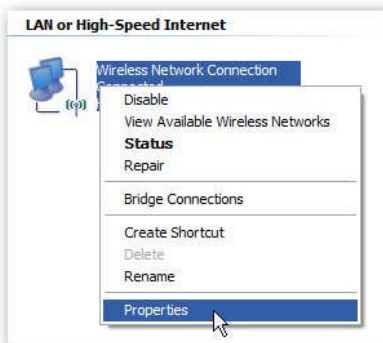
    Connection-specific DNS Suffix . . . : 
    Link-local IPv6 Address . . . . . : fe80::b1b1:6eba:
    IPv4 Address. . . . . : 192.168.2.4
    Subnet Mask . . . . . : 255.255.255.0
    Default Gateway . . . . . : 192.168.2.1
```

Windows XP

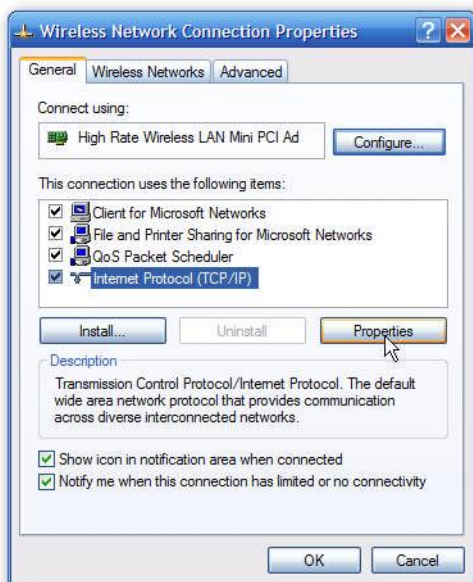
In this example we're using XP SP3 Media Center Edition and changing the IP address of the Wireless adapter. To set a Static IP in XP right-click on My Network Places and select Properties.



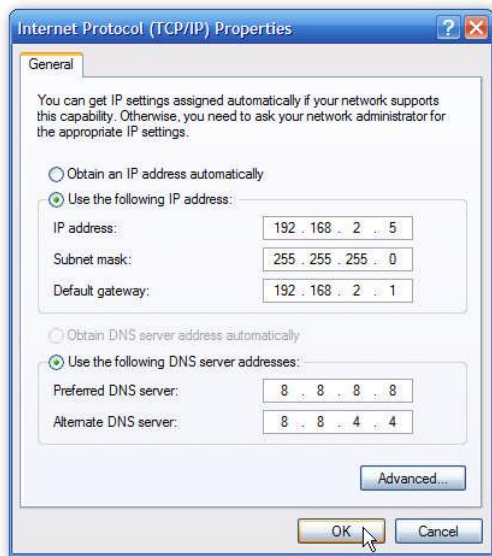
Right-click on the adapter you want to set the IP for and select Properties.



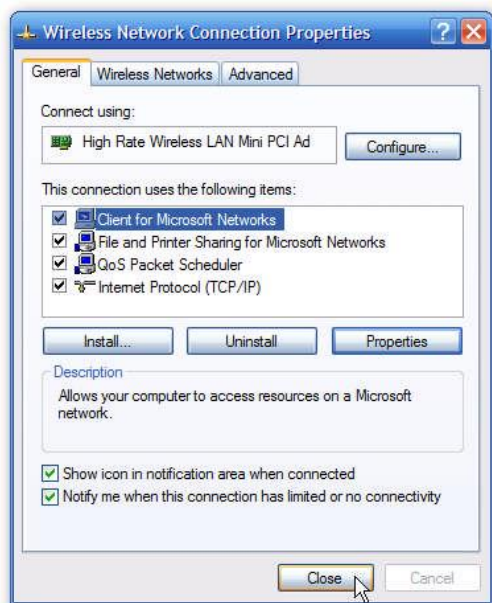
Highlight Internet Protocol (TCP/IP) and click the Properties button.



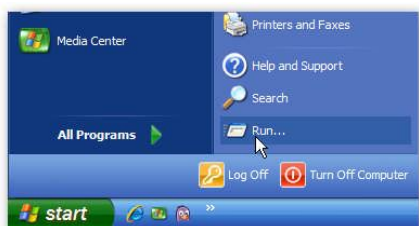
Now change the IP, Subnet mask, Default Gateway, and DNS Server Addresses. When you're finished click OK.



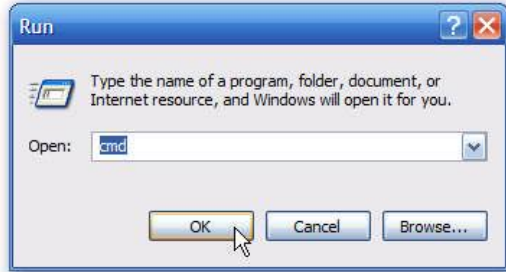
You will need to close out of the Network Connection Properties screen before the changes go into effect.



Again you can verify the settings by doing an ipconfig in the command prompt. In case you're not sure how to do this, click on Start then Run.



In the Run box type in cmd and click OK.



Then at the prompt type in ipconfig and hit Enter. This will show the IP address for the network adapter you changed.



If you have a small office or home network, assigning each computer a specific IP address makes it a lot easier to manage and troubleshoot network connection problems.