




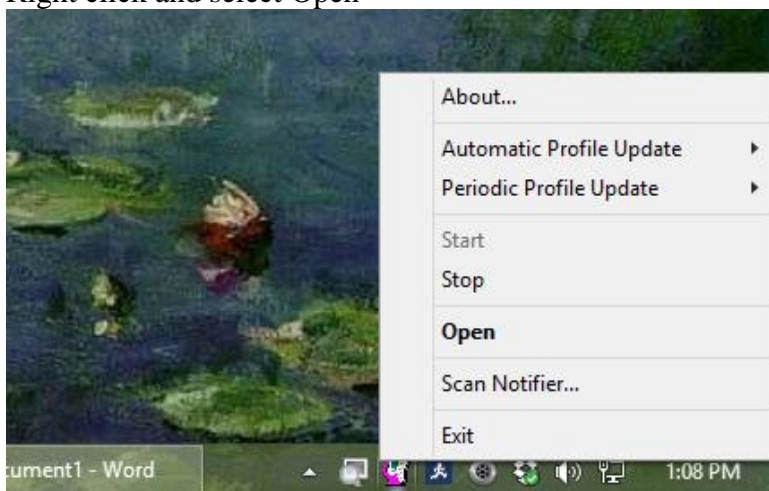
Instruction Sheet

Installing Sharpdesk

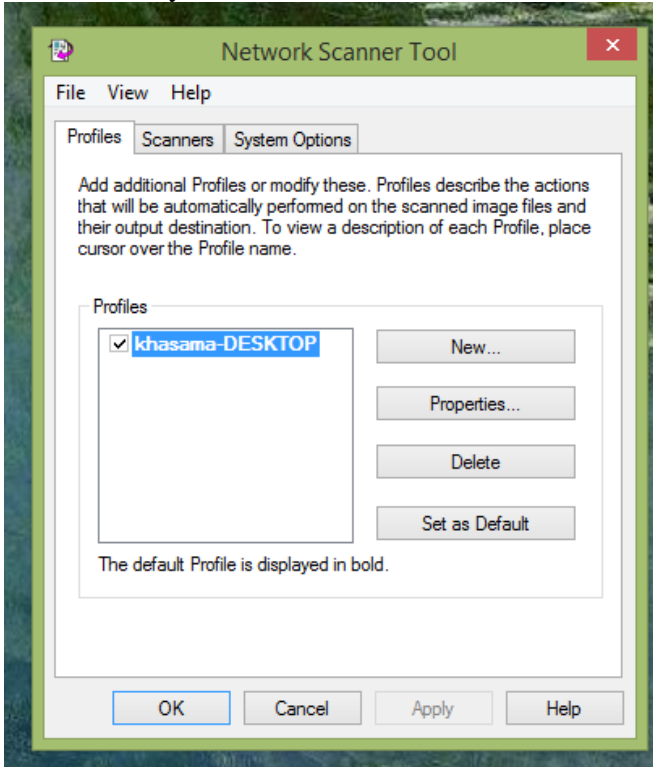
1. Inside the Sharpdesk folder is a second Sharpdesk folder. Run the setup.exe program

Name	Date modified	Type	Size
Redist	4/28/2017 4:08 PM	File folder	
resources	4/28/2017 4:08 PM	File folder	
0x040a.ini	5/15/2006 5:02 PM	Configuration sett...	7 KB
0x040c.ini	5/15/2006 5:02 PM	Configuration sett...	8 KB
0x041d.ini	5/15/2006 5:02 PM	Configuration sett...	7 KB
0x0404.ini	5/15/2006 5:02 PM	Configuration sett...	5 KB
0x0407.ini	5/15/2006 4:02 PM	Configuration sett...	7 KB
0x0409.ini	5/15/2006 4:02 PM	Configuration sett...	6 KB
0x0410.ini	5/15/2006 5:02 PM	Configuration sett...	7 KB
0x0411.ini	5/15/2006 4:02 PM	Configuration sett...	7 KB
0x0413.ini	5/15/2006 5:02 PM	Configuration sett...	7 KB
0x0419.ini	5/15/2006 5:02 PM	Configuration sett...	7 KB
0x0804.ini	5/15/2006 5:02 PM	Configuration sett...	5 KB
0x0809.ini	12/13/2006 4:06 PM	Configuration sett...	6 KB
1026.mst	2/18/2013 9:07 PM	MST File	134 KB
1031.mst	2/18/2013 9:07 PM	MST File	163 KB
1033.mst	2/18/2013 9:07 PM	MST File	4 KB
1034.mst	2/18/2013 9:07 PM	MST File	118 KB
1036.mst	2/18/2013 9:07 PM	MST File	123 KB
1040.mst	2/18/2013 9:07 PM	MST File	120 KB
1043.mst	2/18/2013 9:07 PM	MST File	144 KB
1049.mst	2/18/2013 9:07 PM	MST File	265 KB
1053.mst	2/18/2013 9:07 PM	MST File	113 KB
2052.mst	2/18/2013 9:07 PM	MST File	116 KB
2057.mst	2/18/2013 9:07 PM	MST File	6 KB
Config.dll	7/7/2009 12:29 AM	Application extens...	1,815 KB
Data1.cab	2/18/2013 9:06 PM	CAB File	185,456 KB
instmsia.exe	5/15/2006 4:58 PM	Application	1,484 KB
instmsiw.exe	5/15/2006 4:58 PM	Application	1,496 KB
NSTPProfileUpgrader.exe	2/18/2013 8:44 PM	Application	273 KB
PILogViewer.exe	7/14/2009 9:46 PM	Application	359 KB
PushInstallConfigTool.exe	1/21/2010 9:47 PM	Application	720 KB
sdbabout.exe	9/16/2008 3:19 PM	Application	224 KB
SDSearchIndexHelper.exe	2/11/2013 5:53 PM	Application	341 KB
SDValidator.dll	6/16/2009 11:18 PM	Application extens...	84 KB
setup.exe	2/18/2013 9:00 PM	Application	304 KB
Setup.ini	2/19/2013 4:21 PM	Configuration sett...	3 KB
Sharpdesk.msi	2/18/2013 9:07 PM	Windows Installer ...	13,745 KB

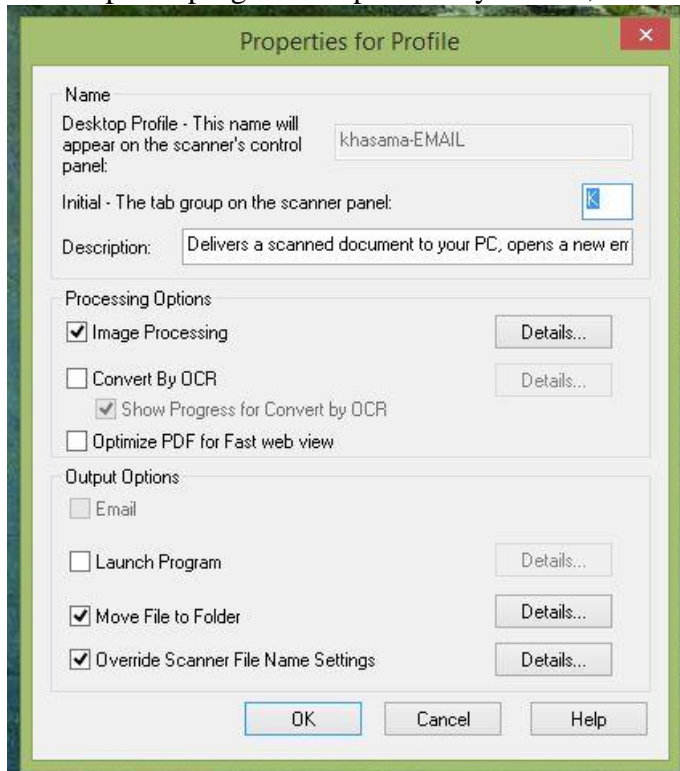
2. Use the supplied Sharpdesk serial number. Make sure to keep the number is a safe place in case you need it again.
3. After installation, run the Network Scanner Tool Configuration Tool inside the newly created Sharpdesk group.
4. Look for the Network Scanner Tool icon  in the Task Bar
5. Right click and select Open



6. This is what you will see



7. Click **Properties**, Check **Image Processing**, check **Launch Program** if you want the Sharpdesk program to open after you scan, and **Override Scanner File Name** to date.



8. Click **OK** and **Apply**. Scanning should work, but you may need to configure some security settings.
9. You may need to configure the Windows Firewall. Go to the Control Panel, then the Windows Firewall.



Click **Allow an app or feature**, add Network Scanner Tool for Public and Private. It is located in Program Files (x86)/Sharp/Sharpdesk/NetScanTool.exe.