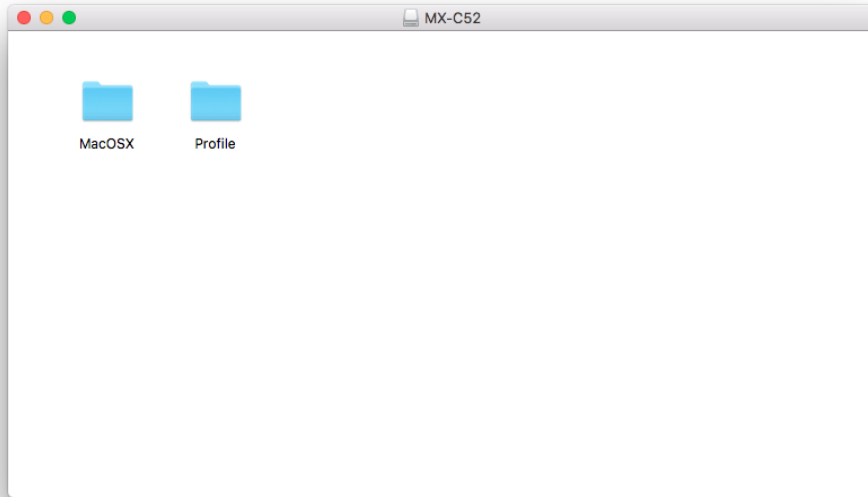




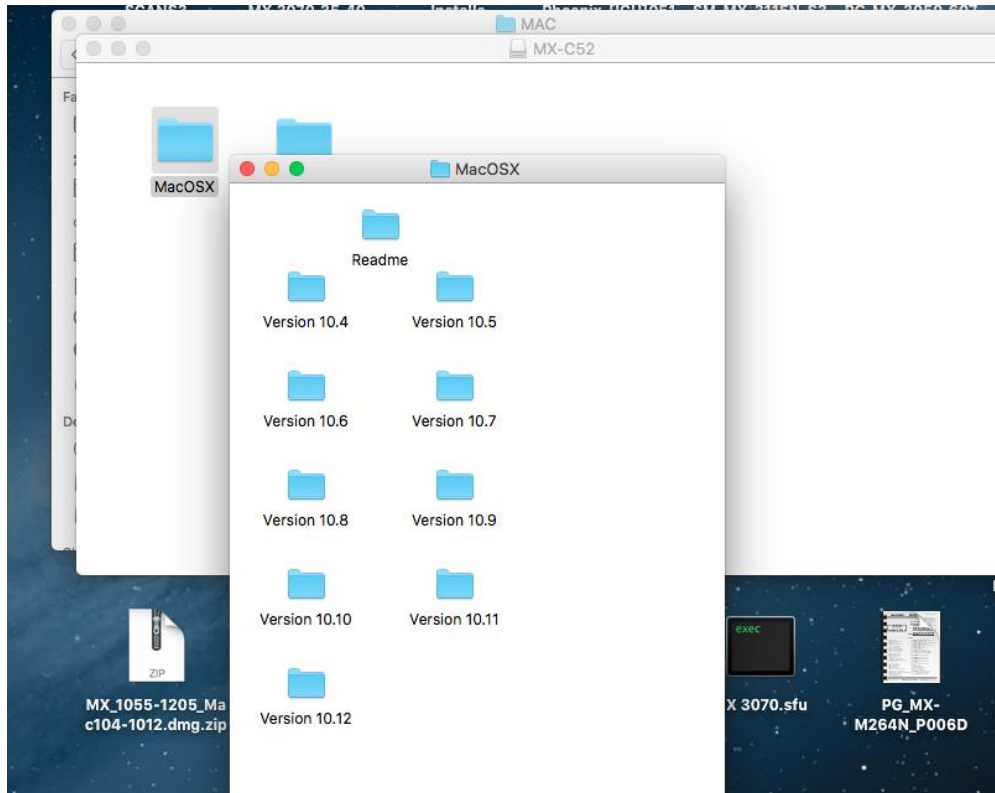
Instruction Sheet

Loading Sharp Printers in OS X

1. Double click the .dmg. Open the MacOSX folder

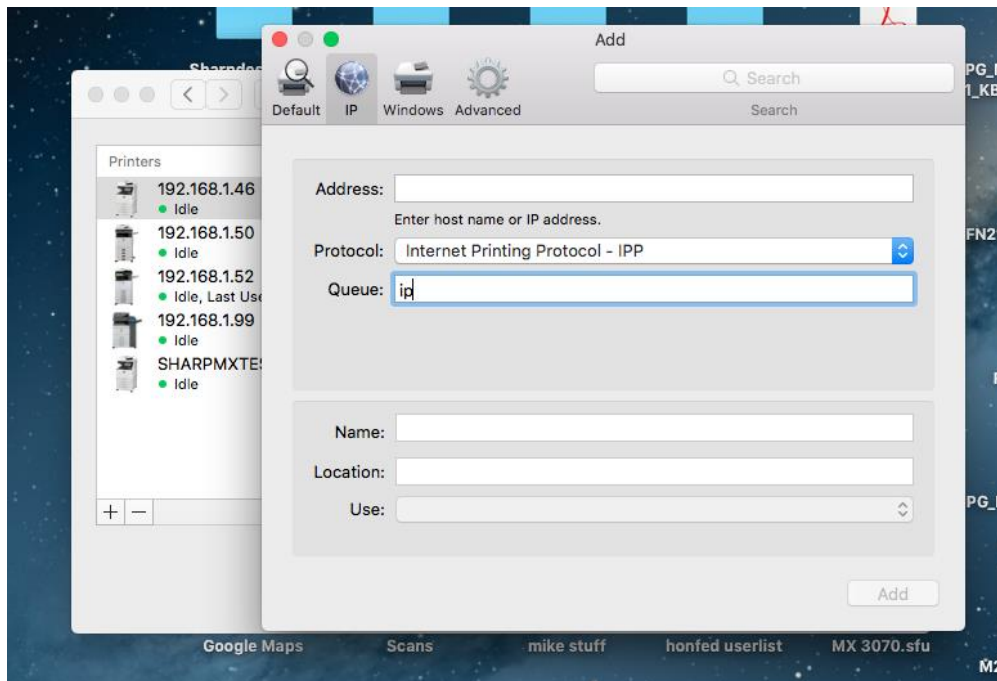


2. Click the Apple logo to see which version of OS X you have. Open the folder that matches your version.

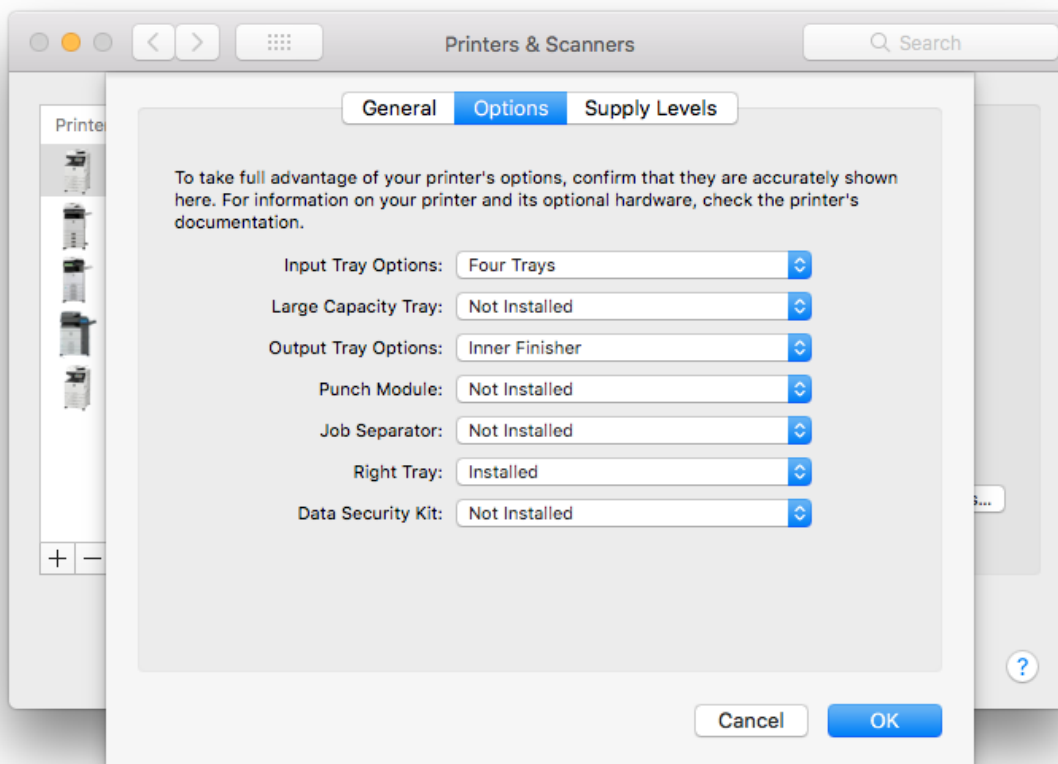


Run the program inside.

3. Go to System Preferences, click the +, select Add Printer. Click the IP tab.

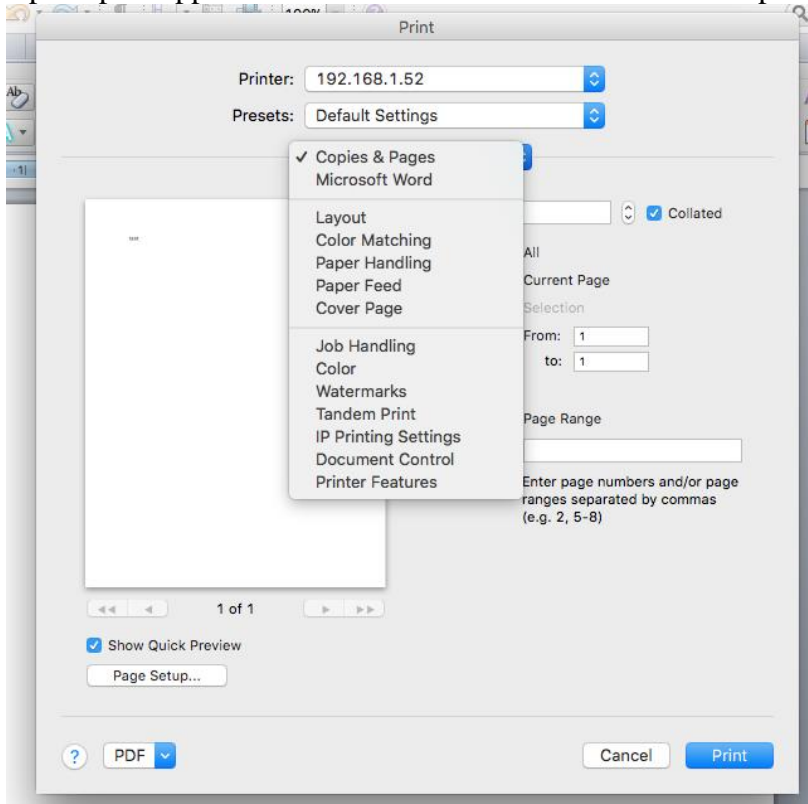


4. Type in ip in the Queue, type in the copier IP address in the Address. You can rename the Name to something user friendly, such as Sharp MX-3070N
5. If OS X doesn't fill in the correct printer in **Use**, the printer is not installed. Make sure the IPv4 address, the subnet, and the default gateway are correct. Make sure you do not have more than one router (wired and wireless) in your network. You can try to manually select the Sharp in **Use**, it may work, or you can try LPD instead of IPP in **Protocol**.
6. After the printer is installed, you have to add the printer options. Click the new Sharp, select Options.



Change the installed options to what they should be and click OK.

7. Open up an application and select File/Print. Click the drop down menu – here Copies & Pages.



8. Choose the settings you want as default, eg. black & white printing. Click Presets and Save Current Settings as Preset.
9. Choose that preset for any new application you want to print from.