



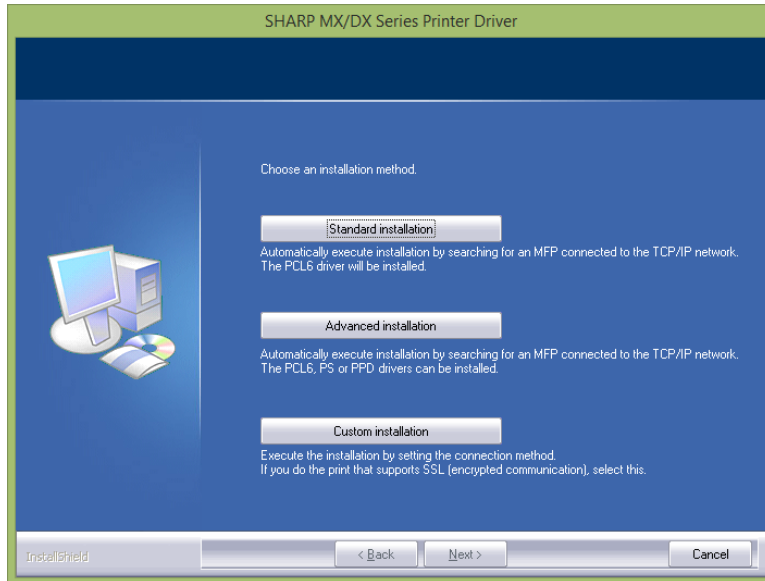
Instruction Sheet

Loading Print Drivers (Windows)

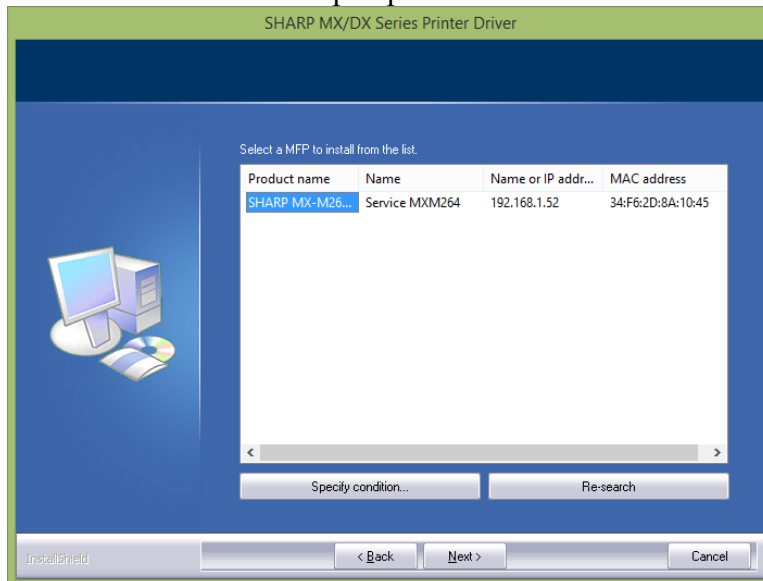
1. First determine if your operating system is 32-bit or 64-bit. Open up a Windows explorer window and right click on “This PC” and select properties. The screen will tell you this among other things.

2. Run the version of the installation program that corresponds

3. Select “Advanced Installation”



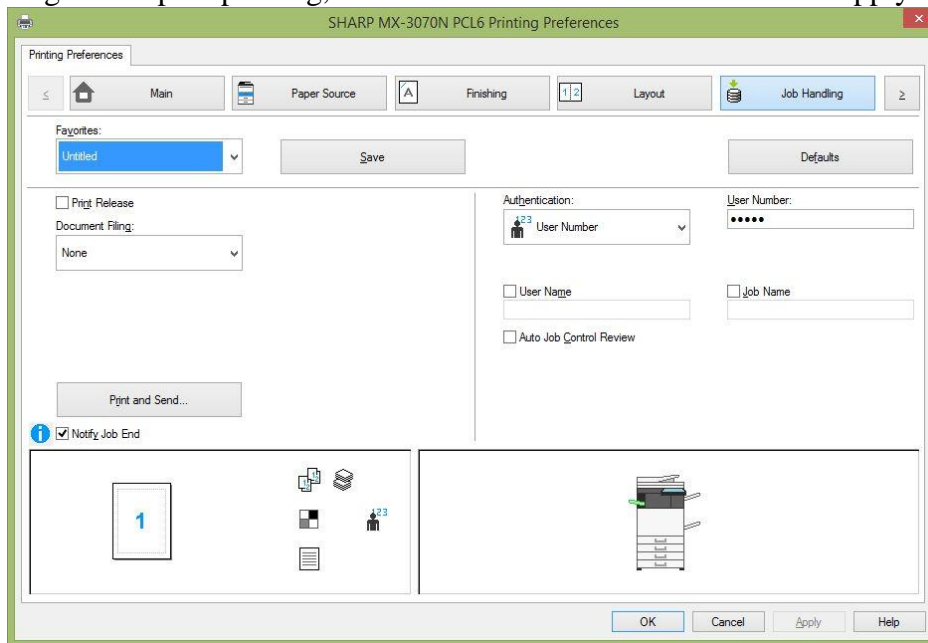
4. It should find the Sharp copier. Click “Next”



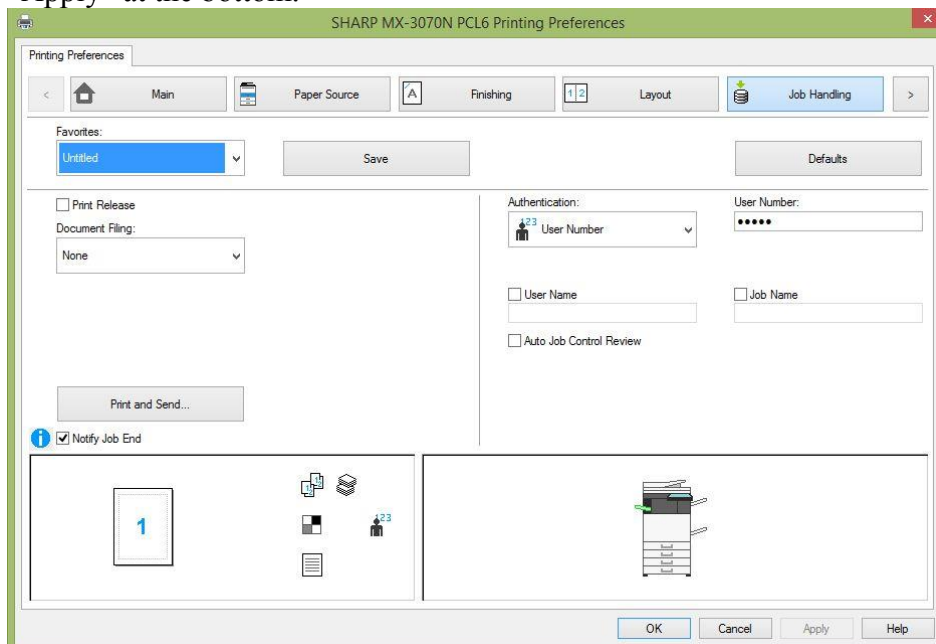
5. If it doesn't find it, click “Specify condition”, type in the copier IP address, and click “Search”.

6. Keep selecting “Next”.

7. After the installation is complete, open the “Devices and Printers” applet in the control panel. Right click the Sharp and select “Printing Preferences”. Put in the settings you want such as single or duplex printing, or black and white as a default. Click Apply.



8. If you use user authentication, you have to enter the information into the print driver as well. Click the “Job Handling” tab. Check “User number” and enter your user number. Click “Apply” at the bottom.



Do the same thing for both the PCL6 and PostScript printers.

8. You are now set up.