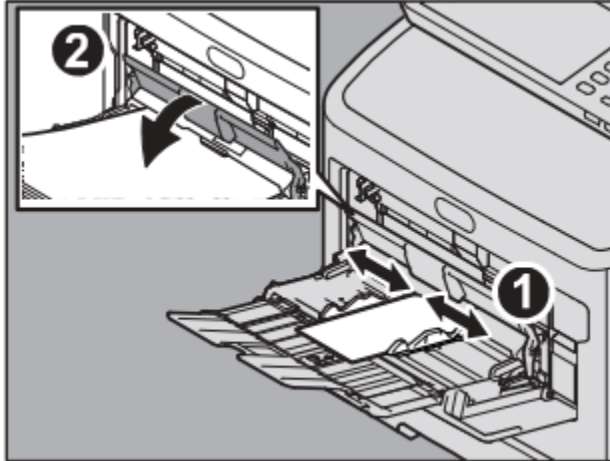
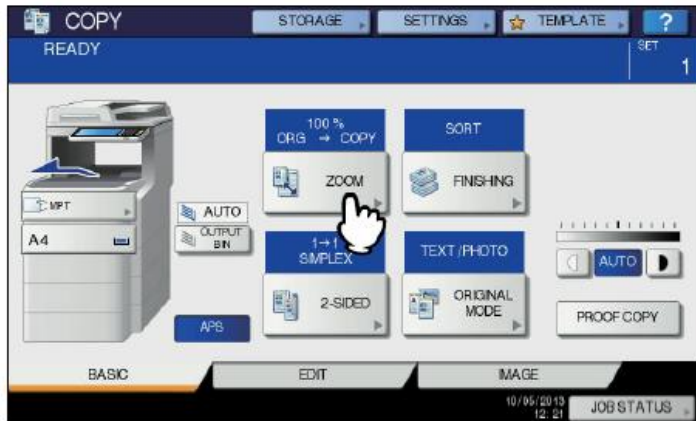


OKI Custom Sizes

1. Open the bypass tray and adjust the manual feeding paper guide



2. Go to the copy screen, press Zoom



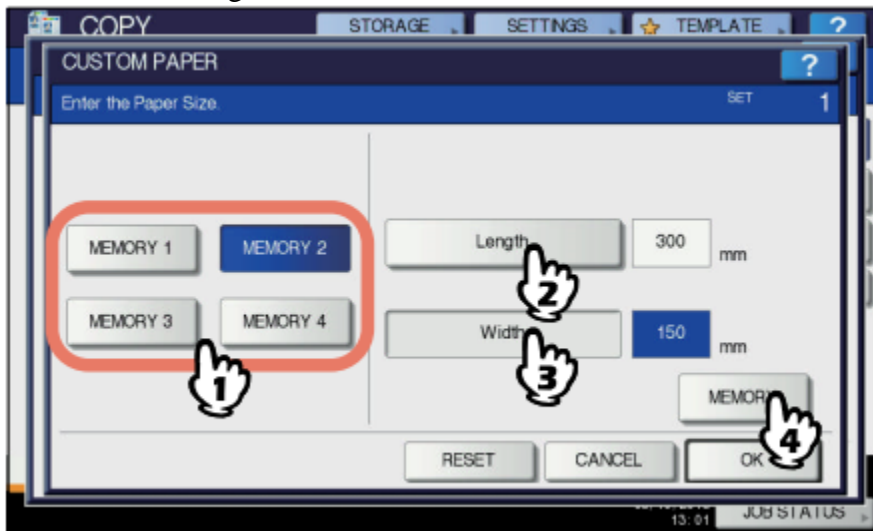
3. Press Custom Paper



4. Key in the dimensions

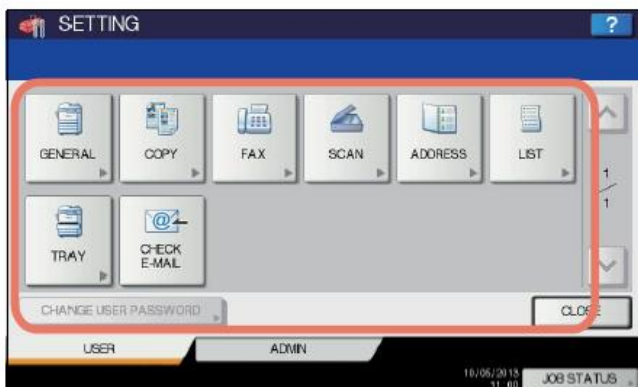


5. You can also register the dimensions

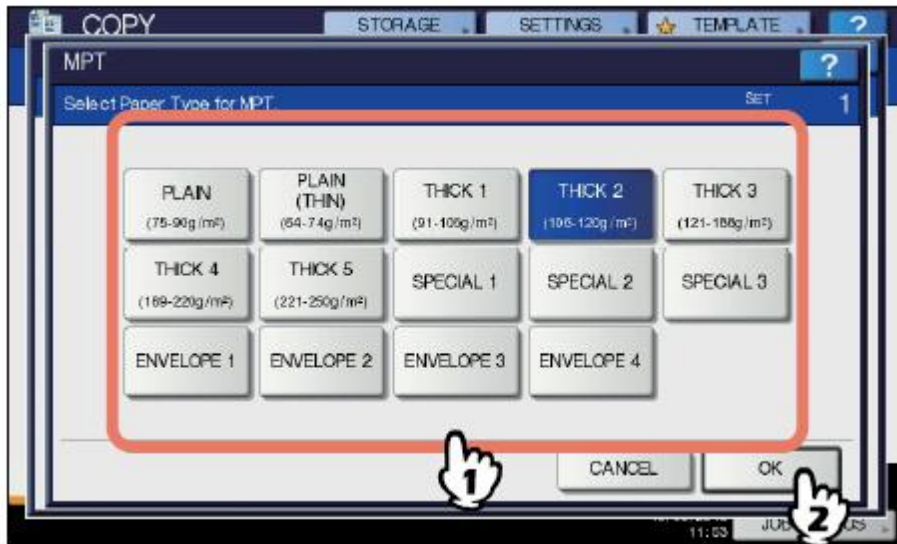


Select a Memory, enter the dimensions, and press **Memory**

6. Press the **Setting** button to the right of the display

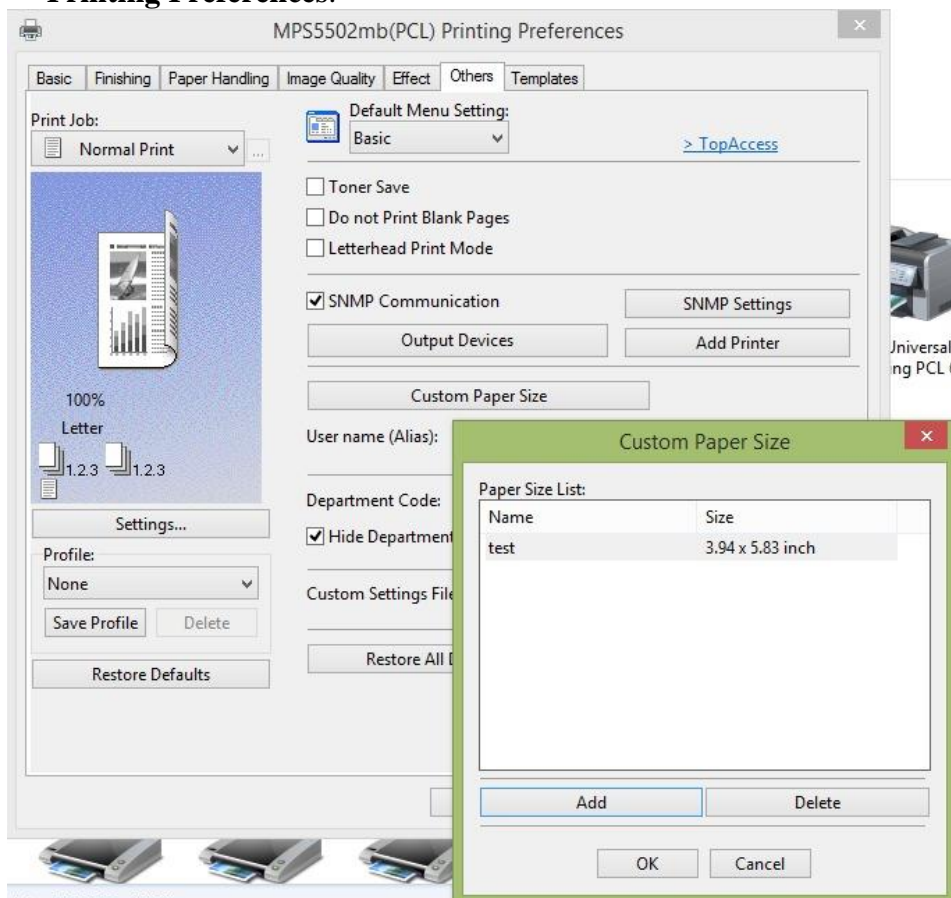


7. Press **Copy**, scroll to the second page



Choose the paper type (labels should be Thick 2) and press **OK**

8. Both the copier and the print driver need to agree, so now we need to set up the computer. Open up your **Control Panel**, look for **Devices and Printers**, right click the OKI, and select **Printing Preferences**.



Go to the **Others** tab and select **Custom Paper Size**

9. Click **Add**, set the custom size, press **OK**. The new size is now added to your list of original paper sizes.

10. To use the new size, just choose it from the drop down list of paper sizes.

